

Classification report

Airborne sound insulation of building elements

Test report 163 30181/Z2e

This is a translation of the test report 163 30181/Z2 of 29th August 2005.

Only the German original is legally binding.



Customer **Press Glas S.A.**
Nowa Wies
Kopalniana 9

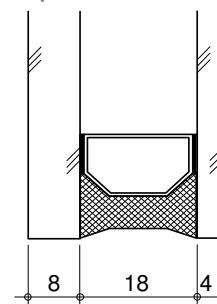
42-262 Poczesna
Polen

Basis

EN ISO 140-1:1997+A1:2004
EN 20140-3 : 1995-01
EN ISO 717-1 : 1996-12

Product	Isolation glass unit
Designation	Float 8 mm / 18 Ar / Thermofloat 4 mm
Size (w × h)	1230 mm × 1480 mm
Construction	8/18/4
Gas filling	Argon
Area related weight	29,7 kg/m ²
Special items	-/-

Representation



Informations for use

This test report may be used to validate the sound reduction of a building element.

Validity for germany:

R_w corresponds to $R_{w,P}$

Validity

The data and results given relate solely to the described, tested object.

Testing the acoustic properties does not allow any statement to be made on further characteristics of the present structure which could define performance and quality.

Notes on publication

The **ift** notice "Conditions and notes for the use of **ift** test documents" applies.

The cover sheet can be used as a summary.

Weighted sound reduction index R_w
Spectrum adaptation terms C and C_{tr}



$$R_w (C; C_{tr}) = 36 (-1;-5) \text{ dB}$$

Contents

This test report includes 6 pages

- 1 Test specimen
 - 2 Test procedure
 - 3 Test results
 - 4 Instructions for use
- Data sheet (1 page)

ift Rosenheim
29. August 2005

i. V. Dr. Joachim Hessinger, Dipl.-Phys.
Head of test laboratory
ift Schallschutzzentrum

i. A. Bernd Saß, Dipl.-Ing. (FH)
Test engineer
ift Schallschutzzentrum



LSW - Labor für Schall- und Wärmemesstechnik GmbH
- das Schallschutzprüfzentrum des ift Rosenheim
Geschäftsführer:
Prof. Fritz Holtz

Lackermannweg 26
D-83071 Stephanskirchen
Tel.+49 (0) 8036 / 3006-0
Fax+49 (0) 8036 / 3006-33
www.lsw-gmbh.de

Sitz: 83026 Rosenheim
AG Traunstein, HRB 14821
Sparkasse Rosenheim
Kto. 500 434 626
BLZ 711 500 00

Anerkannte Prüf-, Überwachungs- und
Zertifizierungsstelle nach
Landesbauordnung: BAY24
Sachverständige Prüfstelle Gruppe I
für Eignungs- und Güteprüfung nach DIN 4109